

## IRONMAN SOP

### **RANGE DESCRIPTION**

-Ironman is an active, small arms, live-fire range supporting both unknown distance and multipurpose static firearms training located at Grid 88446825.

-Ironman is a part of the Calvin A. Lloyd range complex at Weapons Training Bn accessible from Willis Road.

-The range has (12) lanes marked by Black or White number boards located at the far end down range and is divided into two 60m x 445m areas with (6) lanes each:

-The **Left Half** (lanes 1-6) are designated for unit provided paper, plastic, steel reactive targets (SRTs) and requested Trackless Mobile Infantry Targets (TMITs). (Figure-1)

-The **Right Half** (lanes 7-12) are designated for use of the Stationary Infantry Targets (SITs) and Mobile Infantry Targets (MITs) **only**. (Figure-1)

-This range has covered bleachers, a covered weapons cleaning area, and available shooting facades.

-All fires must originate from the designated firing line and stay in the respective lane of fire.

-Firing from the tower or bleachers is prohibited.

**Primary Use:** Small arms unknown distance training.

### **Alternate Uses:**

-Short and mid-range engagement of stationary and limited moving targets.

-Limited engagement of Trackless Mobile Infantry Targets (TMITs).

-Limited light and medium machinegun training.

**NUMBER OF FIRING POINTS:** There are six (6) designated lanes in the Right half when firing at the automated SITs and MITs targets. When firing at stationary paper, plastic, or SRTs in the Left half, the number of firing points will be determined by the type of weapon system and the space needed to safely fire. When using the TMITs in the Left half, the number of firing points will be determined by the chosen scenario depicted in Figures 2 and 3 of this SOP. All firing must occur from the main firing line which is located between the left and right firing point markers and from the leading edge of the bleachers to where the forward edge drops off.

### **Notes:**

-OIC/RSO must check out the IRONMAN key from the WTBN S-3/OOD to access this range.

-Placement of all additional targets on the Right Half of Ironman (Figure-1) requires prior approval from Range Control and must be done in strict accordance with Figure-5.

-Use of 6.8mm ammunition on SRT and on the Right Half of Ironman is prohibited. (SOUM 8-24).

**Conflicts:** See Figure-1 and paragraph G-14 below.

-SAT Range conflicts with Ironman whenever it is hot.

-SAT Range must be in a check-fire for any downrange movement on Ironman.

-Direct coordination between OIC/RSO of each range is required for any movement downrange on Ironman.

-Use of SAT bays 1-4 close the entire downrange portion of Ironman.

-Use of SAT Bay 4 also closes lanes 1 and 2 of the main firing line of Ironman.

-Cross fire on Ironman is prohibited except for the limited TMIT use in Op-Box-1. (Figure-2)

# IRONMAN RANGE



-The Ironman Range is an active small arms, live-fire range at GRID 88446825.  
-Primary Use: Multipurpose range capable of a variety of training scenarios ranging from 30-445 meters including moving SITS and MITS.  
-Alternate Use: Multipurpose range based on units specific needs.  
-Photo captured JULY 30, 2021.

## TARGET DISTANCES TO 165m





TARGET DISTANCES TO 410m



RANGE LAYOUT

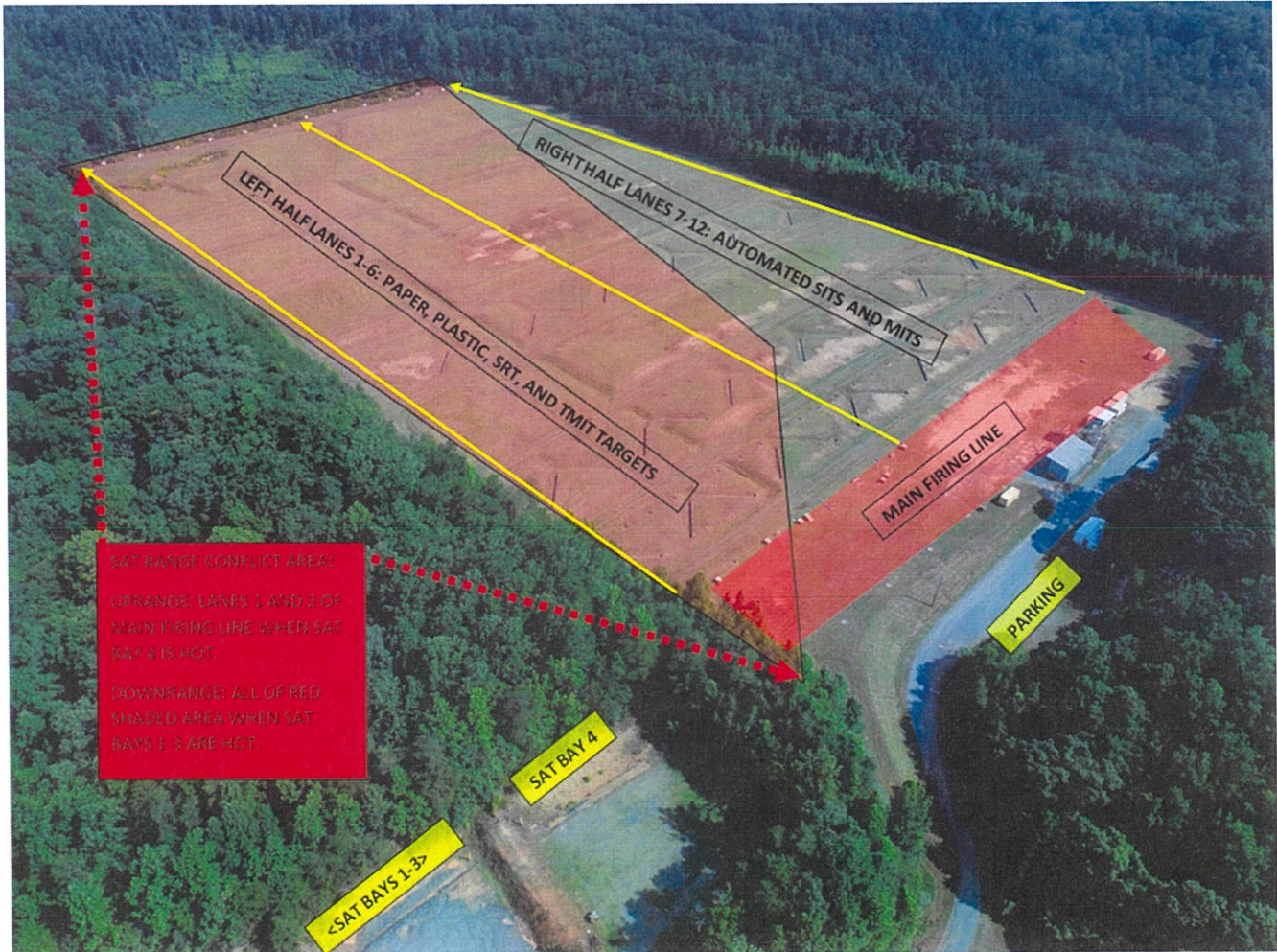


FIGURE-1

**A. WEAPONS ACCOMMODATED:** Detailed list is maintained in RFMSS.

- Service shotguns
- Service pistols
- Service rifles
- Sniper, competition and special application scoped rifles (SASR)
- Approved foreign weapons
- Approved pyrotechnics and illumination when fire conditions allow.
- 40mm hand-held grenade launchers
- Approved automatic rifles

**B. AMMUNITION AUTHORIZED:** Detailed list is maintained in RFMSS.

- Shotgun (All)
- Pistol (All)
- 5.56mm (All)
- 7.62mm (All)
- 7.62mm Special Ball (.308)
- .300 WinMag/Norma Mag
- .338 LaPua Magnum/Norma mag
- .50 cal Ball
- 6.5mm Creedmoor
- 6.8mm
- Approved foreign ammunition
- 40mm Grenade TP, Smoke, and Illum only
- Approved rifle team competition ammunition

**C. LASERS AUTHORIZED:** Class 1 – 3R. Standard aiming devices mounted on approved service rifles. Class 3B (Ex: PEQ-15/16) can be fired if safety screw is installed in lock out, preventing high power settings.

**D. TARGETS/SIMULATORS/DEVICES.**

-LEFT HALF (Lanes 1-6):

- Static SRT, paper, plastic, and TMITs.
- Targets must be placed so that all gun-target lines stay within lateral limit markers.
- TMITs will operate in the designated areas depicted in Figure 2 and Figure 3 only.
- SRT and TMITs will be engaged according to the min-safe distances in paragraph E.

-RIGHT HALF (Lanes 7-12):

- 6 lanes consisting of (30) SITS and (12) MITS protected by SACON concrete bunkers. These targets are battery-operated, and Contractor controlled.
- TIMIT use is **not** authorized on this half of the range.
- Use of any additional targets on this half of the range requires authorization from the IRSO and must comply with the restrictions in Figure-5 so splash/spalling do not damage the target systems.
- Any additional targets must be placed according to Figure-5 and are limited to paper, wood, plastic, and approved steel reactive targets (SRT) only.
- Use of pallets, tires, or use of any debris producing target material is prohibited.
- SRTs must be a minimum of 3/8" and constructed of AR-500 or greater steel and comply with the current SOUM or MCO3570.1 whichever is more recent.
- If approved, SRTs must be engaged according to the min-safe distances in paragraph E.

-EPR ammunition (i.e. M855A1/M80A1) is NOT authorized to be fired on SRTs, TMITs, or steel protective plates for Portable Infantry Targets (PITS).

-Contact Training Support Center (TSC) at (703)432-7026/7969 for target support or questions.

**E. MINIMUM SAFE ENGAGEMENT DISTANCES FOR SRT AND TMITs:**

-Pistol:	7 meters
-Shotgun (bird/buck):	10 meters
-Shotgun (slug):	45 meters
-5.56mm (soft-core):	23 meters
-5.56mm (steel penetrator):	69 meters
-5.45mm:	69 meters
-7.62mm Ball/linked:	150 meters
-7.62mm Special Ball:	150 meters
-7.62x39mm/7.62x54mm:	150 meters
-.300 Win Mag/Norma Mag:	375 meters
-.338 Lapua Mag/Norma Mag:	375 meters
-.50 cal:	375 meters
-6.5mm Creedmoor	375 meters (RTAM edict)
-6.8mm	NOT AUTHORIZED (SOUM 8-24)

NOTES:

1- Use of pistol calibers on TMITs is not authorized due to the short engagement distance and geometry of the gun target lines exceeding the boundary of this range and the Installation boundary.

2- Use of 6.5mm Creedmoor ammo is limited to 375m engagements by RTAM edict.

3- Use of 6.8mm ammo is prohibited on SRT and TMITs IAW SOUM 8-24.

**THIS AREA INTENTIONALLY LEFT BLANK**



## TMIT OPERATING BOX (OP-BOX)-1



FIGURE-2

### F. Special Instructions for Trackless Mobile Infantry Targets (TMITs):

(1) TMIT Op-Box-1 (Figure-2) (133m wide x 245m deep “triangle”):

- Firing from any point along the left half of firing line on TMITs in this Op-Box is authorized.
- TMITs are authorized to conduct any scenario inside the movement area indicated in Figure-2 as the terrain and caliber restrictions allow.
- Crossfire on TMITs in this manner is authorized in this Op-Box only.
- Cross firing on any other targets anywhere else on Ironman is strictly prohibited.
- When SAT bay 4 is hot the firing line for TMITs is reduced to lanes 3-6 only as depicted in Figure-1.



## TMIT OPERATING BOX (OP-BOX)-2

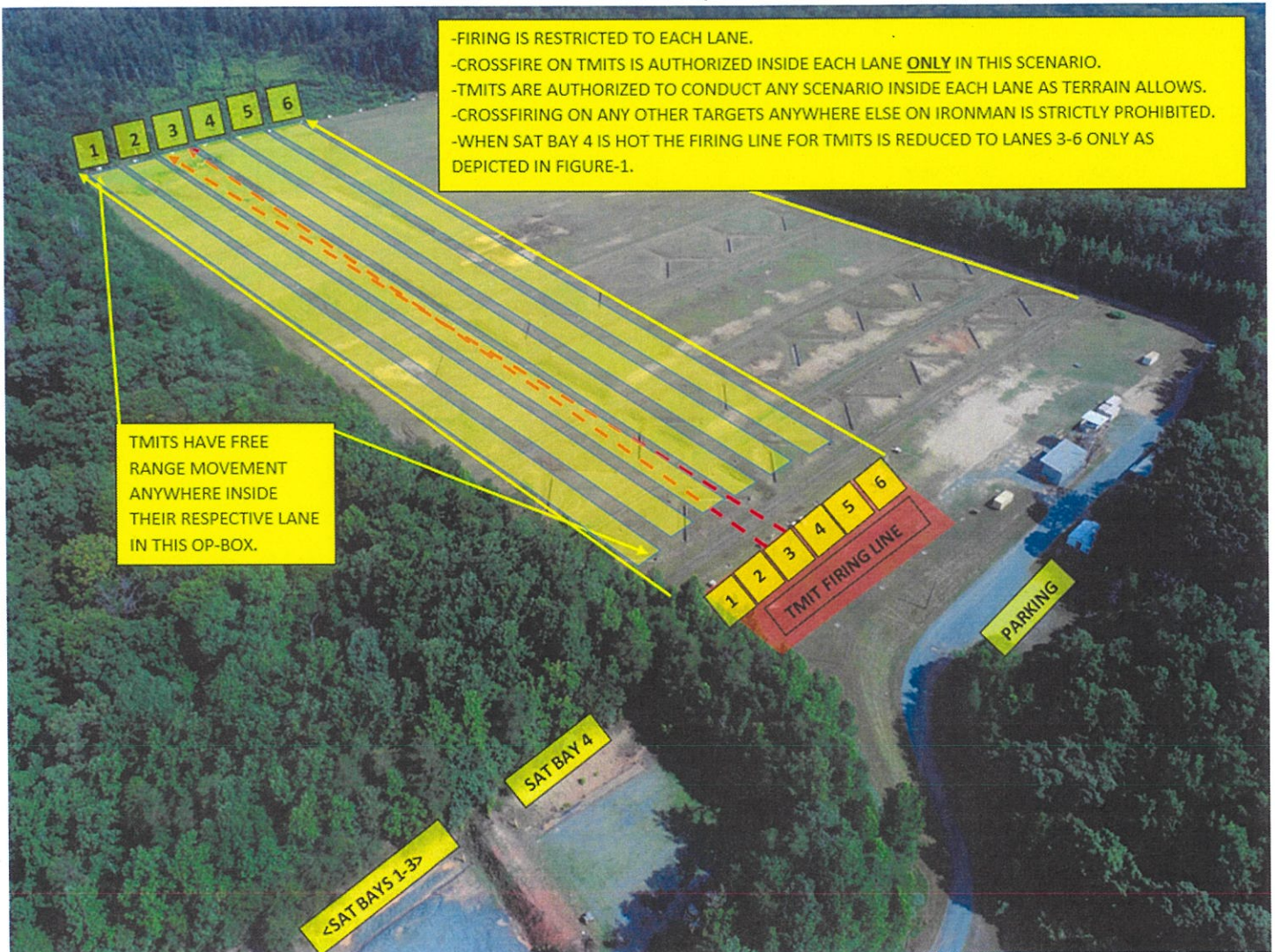


FIGURE-3

### **F.(cont) Special Instructions for Trackless Mobile Infantry Targets (TMITs):**

(2) TMIT Op-Box-2 (Figure-3) (18.5m wide x 400m deep lanes):

- Firing is restricted to each lane.
- Crossfire on TMITs is authorized inside each lane only in this Op-Box.
- TMITs are authorized to conduct any scenario inside each lane as indicated in Figure-3 as the terrain and caliber restrictions allow.
- Cross firing on any other targets anywhere else on Ironman is strictly prohibited.
- When SAT bay 4 is hot the firing line for TMITs is reduced to lanes 3-6 only as depicted in Figure-1.



TMIT OP-BOXES BY GRID AND DIMENSIONS

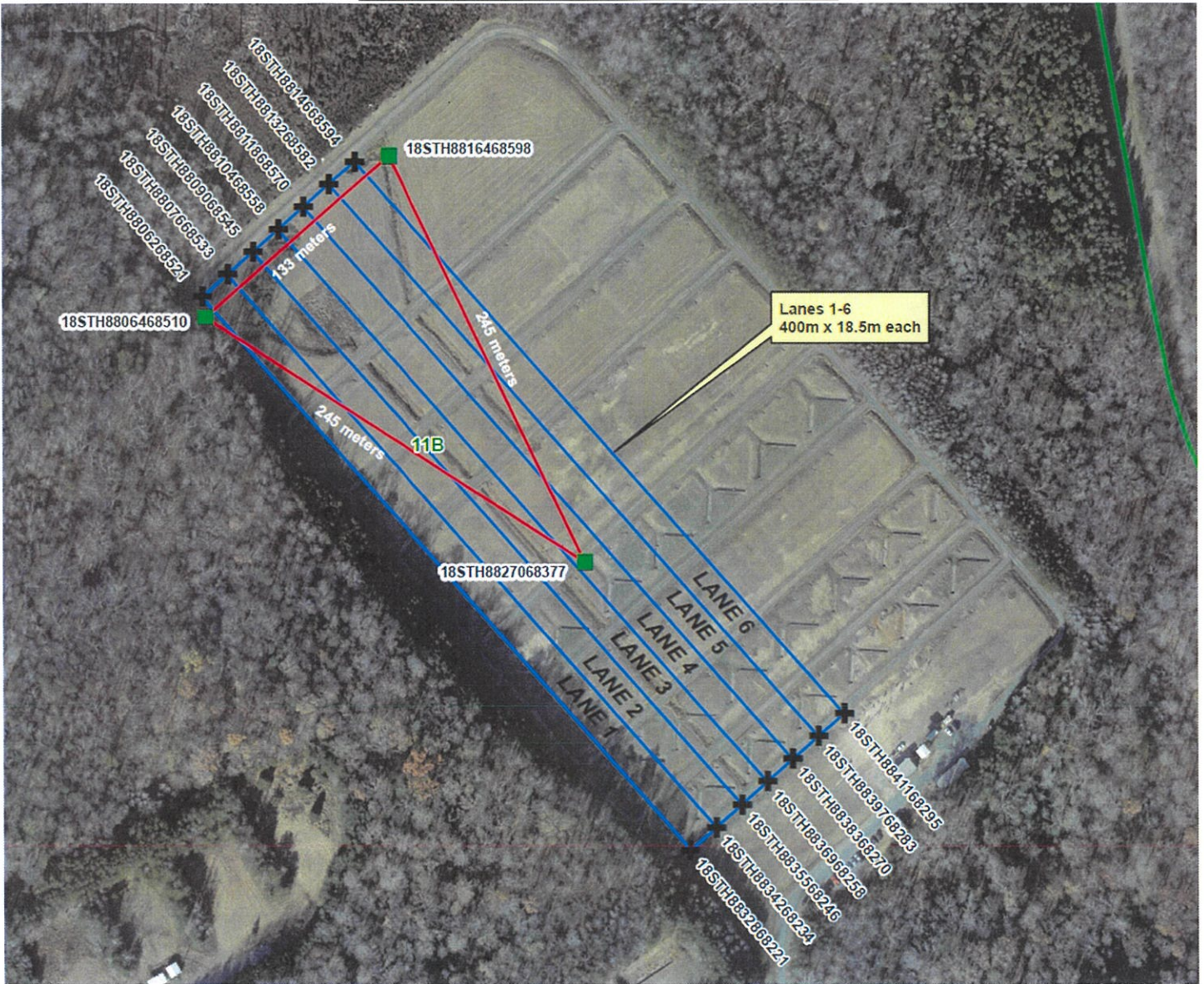


FIGURE-4



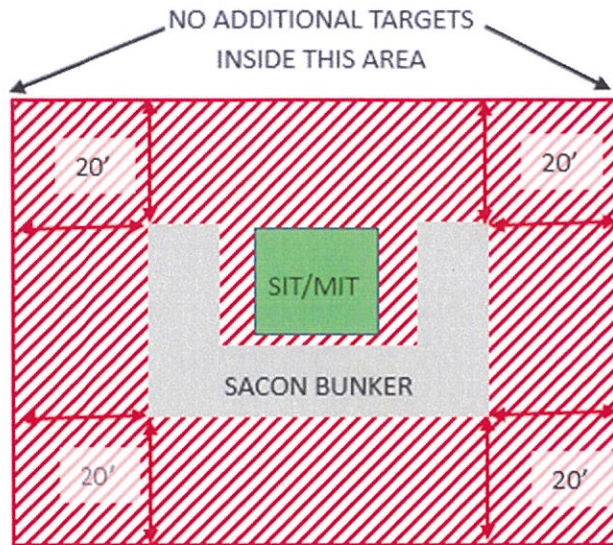


Figure-5

### G. RANGE USE RESTRICTIONS/COMMENTS

1. All range regulations MCO 3570.1, MCBO 3570.1, and this SOP will strictly adhered to.
2. Using unit will check-in with WTBn S-3 and receive range brief and radios prior to occupying the range.
3. For WTBN units/sections: The OIC **and** RSO will be physically present on the range at all times during live fire training and events. For multiple ranges/events in one unit/section, only one OIC is required, but must be physically located on one of the ranges (SAT Range excluded).
4. For external units: The OIC **and** RSO will be physically present on Ironman range at all times during live fire training and events. For multiple ranges/events with external units, an OIC and RSO is required for each range, and must be physically located on each of those ranges.
5. The Officer-in-Charge (OIC) shall be the rank of Staff Sergeant or above and will be certified in accordance with MCBQ Range Regulations. The Range Safety Officer (RSO) shall be the rank of Sergeant or above and will be qualified in accordance with MCBQ Range Regulations.
6. Red range flag is placed on the pole next to the range entry point. Red flashing light will be used for night firing.
7. All target debris and trash will be removed from the range and inspected before departing.
8. The only weapons and ammunition to be used are those included in this SOP and detailed in RFMSS. There shall be no deviations from or modification to the approved weapons and ammunition.
9. The only targets to be used on this range are the automated target systems, approved SRTs, paper, wood, plastic and TMITs. Approved static targets are only to be placed on the left half of the range. No other targets are authorized.

10. SRTs are authorized on the left half of Ironman only. Use of SRT or any additional targets on the right half requires authorization from the IRSO and must comply with placement in Figure 5.
11. Use of vehicles as targets is prohibited.
12. Use of vehicles as barriers or firing platforms requires approval from the IRSO and the vehicle is required to be certified clear of all oils, fuels, and fluids. The vehicle will be placed on a tarp or other material that can catch any drips, broken glass, or other debris.
13. Use of any barriers or firing platforms requires additional care be taken to ensure the muzzle is clear of the barrier.
14. WTBN SAT Range (to the left) conflicts with Ironman. (Figure-1)
  - a. When Bays 1-3 of WTBn SAT Range are hot, personnel may not be downrange on Ironman forward of the main firing line as indicated in Figure-1. The main firing line consists of the flat area from the bleachers to the first terrain drop off moving down range.
  - b. When Bay 4 of the WTBn SAT Range is hot, personnel may not occupy the firing line on the extreme left side of Ironman lanes 1 and 2 the area indicated by red in Figure-1. This area is represented on the range by two posts. One just forward of the firing line and one adjacent to the dedication marker near the tree line.
15. Fire and Movement or Fire and Maneuver are not authorized. The only exception is firing on the move to support the execution of the Marine Corps Combat Marksmanship Program and training scenarios based upon those Tables. Firing on the move will occur only on the main firing line.
16. With the exception of the limited crossfire authorized for TMITs, all firing across the face of the range is prohibited. Shooters will fire straight downrange in a lane-oriented fashion, and ALL impacts will be within the range lateral limit markers.
17. Automatic fire is authorized for 6-9 round burst only. Automatic fire must be in the Communication Tab of the RFMSS range request and the RCF must know the range is conducting automatic fire prior to going hot.
18. The automated target system will be set-up by a contractor and is scheduled through RFMSS and the Training System Support Desk.
19. Lane 13, far right end of the range, has been permanently dismantled. SDZ's from Lane 13 cross MCB-1 and may not be restored.
20. Special consideration will be put on firing tracers during heightened fire danger class codes due to this range not having an impact berm.
21. M203/40mm ground smoke can only be fired on the left half in lanes 1-6 due to fire hazard for automated targets in lanes 7-12 of the right half.



22. Units that have requested contractor support (TMITs, automated targets, PITS targets, battlefield effects simulators, etc.) are required to contact a Government representative (TECOM Systems Support Officer (SSO) or Fire Desk) if the unit will not be present on the specified range within 1 hour of the approved time in RFMSS..

23. Units that have occupied a range with approved contractor support (TMITs, automated targets, PITS targets, battlefield effects simulators, etc.) and that have not begun to use that support within 2 hours of the approved time in RFMSS will forfeit all contracted support for the day.

24. Units that are training with contractor support (TMITs, automated targets, PITS targets, battlefield effects simulators, etc.) that place themselves into a voluntary check fire for 2 hours or more during the approved support hours will forfeit remaining support for the day.

NOTE: Units that encounter situations where contractor support (TMITs, automated targets, PITS targets, battlefield effects simulators, etc.) is delayed or interrupted by circumstances beyond the control of the requesting unit (RMB directed check fire, ASP support, MEDEVAC, etc.) must contact a Government representative (SSO or Fire Desk) in order to arrange continued support within the scope of the contract and available assets.

25. If battle effect simulators are to be used on this range, qualified personnel trained on the systems must be present.

**H. APPLICABLE MAP SHEET:** All grid coordinates listed in this order apply to the Quantico Military Installation Map V834S Edition 5-NGA 1:25,000

**I. FACILITIES**

Towers: 1 Used by the range support Contractor to control automated targets. Firing from this tower is not authorized.

Bleachers: 1

Sheds: 2

Ammo Breakdown table: 1

Heads: Porta-Johns (3)

Parking: Limited

**J. UTILITIES AVAILABLE**

Electricity: Yes

Lights: Yes

Water System: None

**K. INSTALLED COMMUNICATIONS.** None.

**L. Nearest MEDEVAC Landing Zone:**

-LZ Wren

-Located on the northeast corner of Ironman at grid: 883686

NOTE: The actual location of the MEDEVAC LZ will be determined by Quantico Fire and Emergency Services at the time of the emergency. LZ listed here is for reference only.

**M. AVAILABLE DAYS/HOURS.** 362/0500-2359. All other times require special permission due to quiet hours.

**N. AREA SUITABILITY**

<u>Unit Type</u>	<u>Unit Size</u>	<u>Number of Units</u>
Combat	Company	1

**O. GEOGRAPHICAL DATA**

Access Routes: Willis Road  
Soil Type: Dirt  
Terrain Type: Small hills  
Vegetation: Grass/Woodlands

**P. COMMUNICATION REQUIREMENTS:**

1. A radio check is required immediately upon occupying any portion of the RTA, every 30 minutes at top/bottom of the hour in a live fire status and every 3 hours top of the hour in a non-live fire status.
2. The Range Control Facility (RCF) Fire Desk Safety Net call sign is "Range Control". Your call sign is "WTBN IRONMAN".
3. OIC/RSO will comply with all guidance and commands given by the RCF.
4. The Primary means of communication with the RCF (Fire Desk) on the Safety Net is via the ELMR Radio provided to OIC/RSO at time of check out on the talk group "RC Safety" (ground) and 134.1 VHF (air).
5. The Secondary means of communication with the RCF (Fire Desk) is via the OIC/RSO Cell Phone to: 703-784-5321 or 5322. Cell phone number is verified at time of occupation.
6. OIC/RSO will monitor the RCF Primary and Secondary Safety Nets at all times. Instant communication is required.
7. Any unit with organic ELMR radios will have the "RC Safety" talk group programed in and use those radios as their primary means of communication within the RTA.
8. Units without organic ELMR assets will be issued ELMR radios from RMB upon check-in.
9. Approved Non-ELMR radios are only authorized for internal communication (ground).
10. If the RCF cannot reach a unit within the RTA via primary communication, the unit will be contacted via the secondary means of communication.
11. Upon loss of primary communication the OIC/RSO will initiate a "check fire"/cease training status and will contact the RCF via secondary communication. This communication will be maintained while primary communication is being restored. Units may only resume firing/training once primary communication has been re-established and clearance is granted by the RCF.



12. ELMR Radios are required to maintain 19ft (6m) separation from HERO unsafe ordnance and 10ft (3m) separation from HERO susceptible ordnance. Cell Phones are required to maintain 10ft (3m) from HERO unsafe and HERO susceptible ordnance.

**Q. INJURY CLASSIFICATIONS:**

Injuries are classified into the following categories to aid in casualty evacuation from the RTA.

1. ROUTINE. Routine injuries are those injuries that are not threatening to life, limb or eyesight; and conditions or illnesses treatable by medication or procedures available at the base medical facilities.
2. PRIORITY. Priority injuries are those injuries that require immediate medical attention but are not threatening to life, limb, or eyesight if treated promptly.
3. URGENT. Urgent injuries are severe injuries that are threatening to life, limb, or eyesight and require immediate medical attention.
4. MASS CASUALTY. A mass casualty is a series of injuries with multiple priority and urgent medical patients.

**R. MEDICAL EVACUATION (MEDEVAC) PROCEDURES:**

1. Injury occurs.
2. Range will immediately cease fire.
3. Range notifies S-3/OOD of injury.
4. S-3/OOD dispatches corpsman.
5. OIC notifies the RCF of the injury, stating briefly what happened, the extent of the injury and what type of MEDEVAC transportation needed (ground/air).
6. Medical support evaluates/treats injured personnel.
7. Maintain constant radio contact with Range Control and await further instructions.



INSTALLATION RANGE SAFETY OFFICER

DATE: 12 JULY 2024