

IRONMAN

RANGE DESCRIPTION

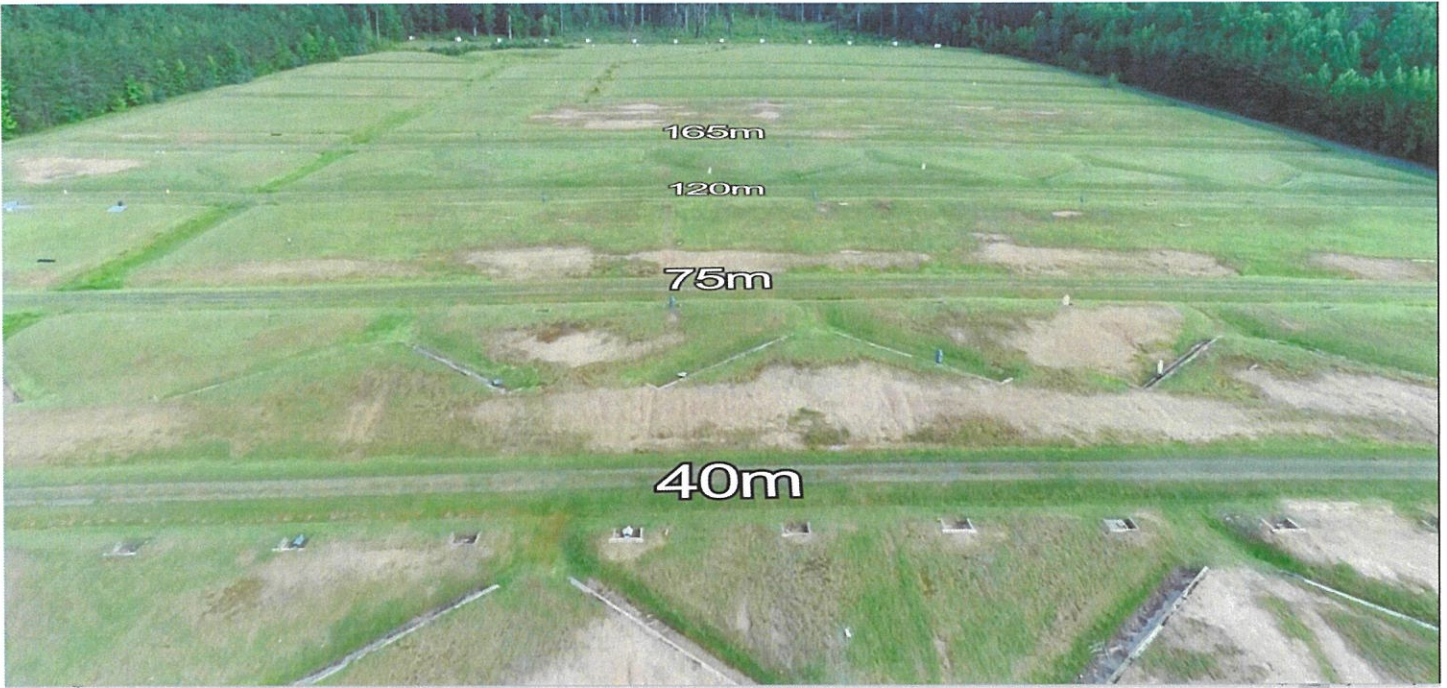
Ironman is an active, small arms, live-fire range located at Grid 88446825. It is accessible from Willis Road. It is an unknown distance range consisting of two 60 x 445 meter areas. The Left half (lanes 1-6) are for unit provided paper, plastic, or steel reactive targets (SRTs) and requested Trackless Mobile Infantry Targets (TMITs). The Right half (lanes 7-12) are for Stationary Infantry Targets (SITs) and Mobile Infantry Targets (MITs) only. This range has covered bleachers, a covered weapons cleaning area, and available shooting facades. It is a multipurpose range capable of a variety of training scenarios ranging from 30-445 meters. All fires must originate from the designated firing line and stay in the respective lane of fire.

GENERAL RANGE INFORMATION:

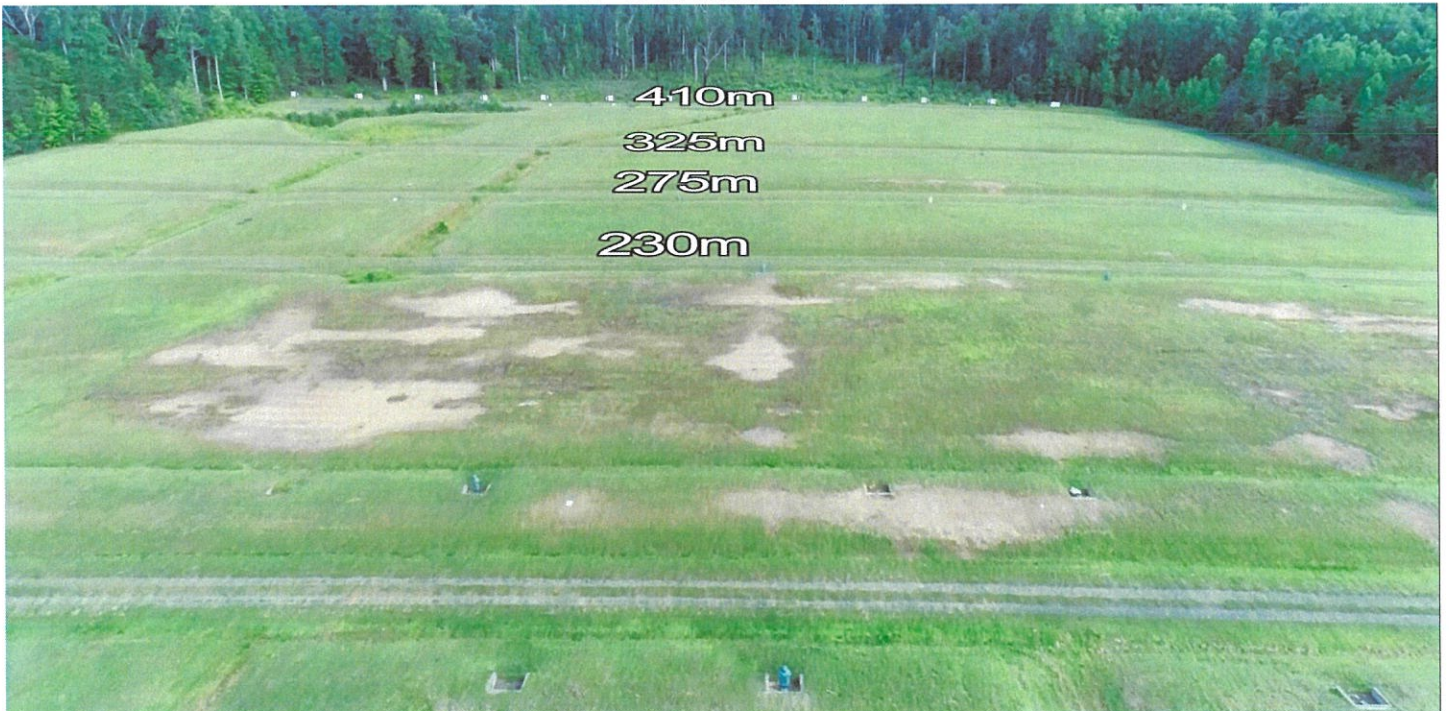
NUMBER OF FIRING POINTS: There are six (6) designated lanes in the Right half when firing at the automated SITs and MITs targets. When firing at stationary paper, plastic, or SRTs in the Left half, the number of firing points will be determined by the type of weapon system and the space needed to safely fire. When using the TMITs in the Left half, the number of firing points will be determined by the chosen scenario depicted in Figures 2 and 3 of this SOP. All firing must occur from the main firing line which is located between the left and right firing point markers and from the leading edge of the bleachers to where the forward edge drops off.



TARGET DISTANCES TO 165m



TARGET DISTANCES TO 410m



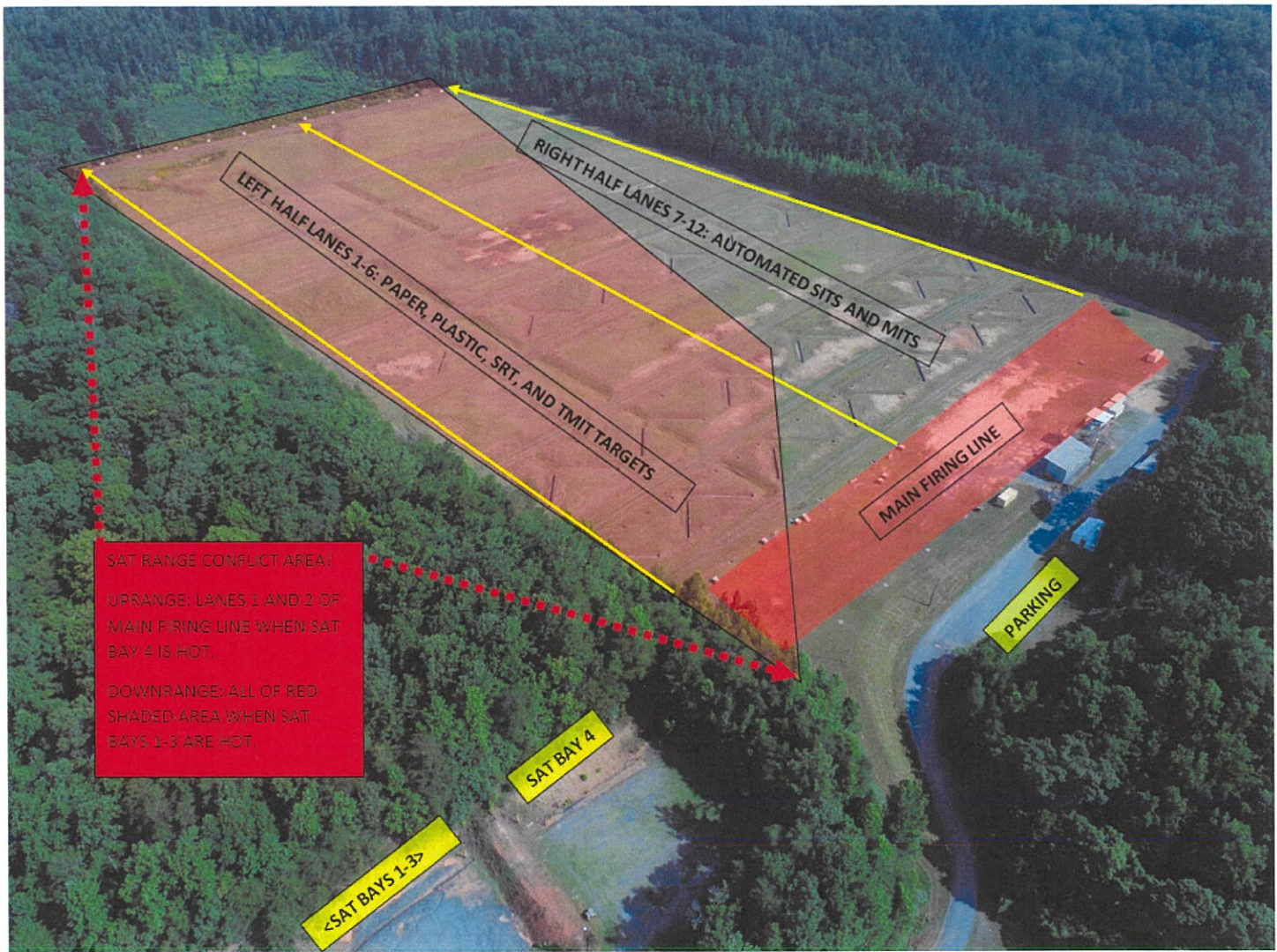


FIGURE-1

GENERAL RANGE INFORMATION:

Number of Firing Points:

- Left half: Multiple points safely allowable for paper, plastic, SRT, and TMITs in scenario in Figure-2. 6 lanes for TMITs in Figure-3.
- Right half: 6 lanes for firing on

WEAPONS ACCOMMODATED: Detailed list is maintained in the Range Facility Management Support System (RFMSS).

- Service shotguns
- Service pistols
- Service rifles
- Sniper, competition and special application scoped rifles (SASR)
- Approved foreign weapons
- Approved pyrotechnics and illumination when fire conditions allow.
- 40mm hand-held grenade launchers
- Approved R & D weapons
- Approved automatic rifles

AMMUNITION AUTHORIZED

- Shotgun (All)
- Pistol (All)
- 5.56mm (All)
- 7.62mm X 51mm Ball
- 7.62mm X 51mm Special Ball (.308)
- 7.62mm X 67mm (.300 WinMag)
- 8.6mm X 70mm (.338 LaPua Magnum)
- 12.7mm X 99mm (.50 cal BMG ball)
- Approved foreign ammunition
- 40mm Grenade TP, Smoke, and Illum
- Approved rifle team competition ammunition

TARGETS/SIMULATORS/DEVICES.

- LEFT HALF (Lanes 1-6):
 - Static SRT, paper, plastic, and TMITs.
 - Targets must be placed so that all gun-target lines stay within lateral limit markers.
 - TMITs will operate in the designated areas depicted in Figure 2 and Figure 3 only.
- RIGHT HALF (Lanes 7-12):
 - 6 lanes consisting of (30) SITS and (12) MITS protected by SACON concrete bunkers. These targets are battery-operated and Contractor controlled.
 - Targets are limited to paper, wood, plastic and approved ballistic steel reactive targets (SRT).
 - SRTs must be a minimum of 3/8" and constructed of AR-500 or greater steel.
 - SRTs will not be engaged closer than 100m with 5.56mm or 7.62mm for targets provided by unit.
 - EPR ammunition (i.e. M855A1/M80A1) is NOT authorized to be fired on SRTs, TMITs, or steel protective plates for Portable Infantry Targets (PITS).
 - Contact Training Support Center (TSC) at (703)432-7026/7969 for targetry support or questions.

Minimum engagement distances for SRTs:

- Pistol (non-magnum): 7 meters
- Shotgun (buck/bird): 10 meters
- Shotgun (slug): 50 meters
- 5.56mm/.223 Ball/link: 150 meters for TSC targets
100 meters for unit-owned targets
- 7.62mm Ball/linked: 150 meters for TSC targets
100 meters for unit-owned targets
- 7.62mm Special Ball: 150 meters
- .300 WinMag Ball: 300 meters
- .338 LaPua Magnum: 300 meters

-Approved foreign weapons ammunition

- Pistol (non-magnum): 7 meters
- 5.45mm: 150 meters for TSC targets
100 meters for unit-owned targets
- 7.62mm Ball and linked: 150 meters for TSC targets
100 meters for unit-owned targets
- 7.62mm x 54R: 150 meters for TSC targets
100 meters for unit-owned targets

Minimum engagement distance for Trackless Mobile Infantry Targets (TMITS):

- .300 WinMag: 300 meters
- 7.62mm: 150 meters
- 5.56mm (steel penetrator): 69 meters
- 5.56mm (soft core): 23 meters
- Pistol calibers (non-magnum): NOT AUTHORIZED. GEOMETRY OF GUN-TARGET LINES WILL EXCEED THE LIMITS OF THIS RANGE AND EXIT THE INSTALLATION.

TMIT SCENARIO-1



FIGURE-2

TMIT SCENARIO-2

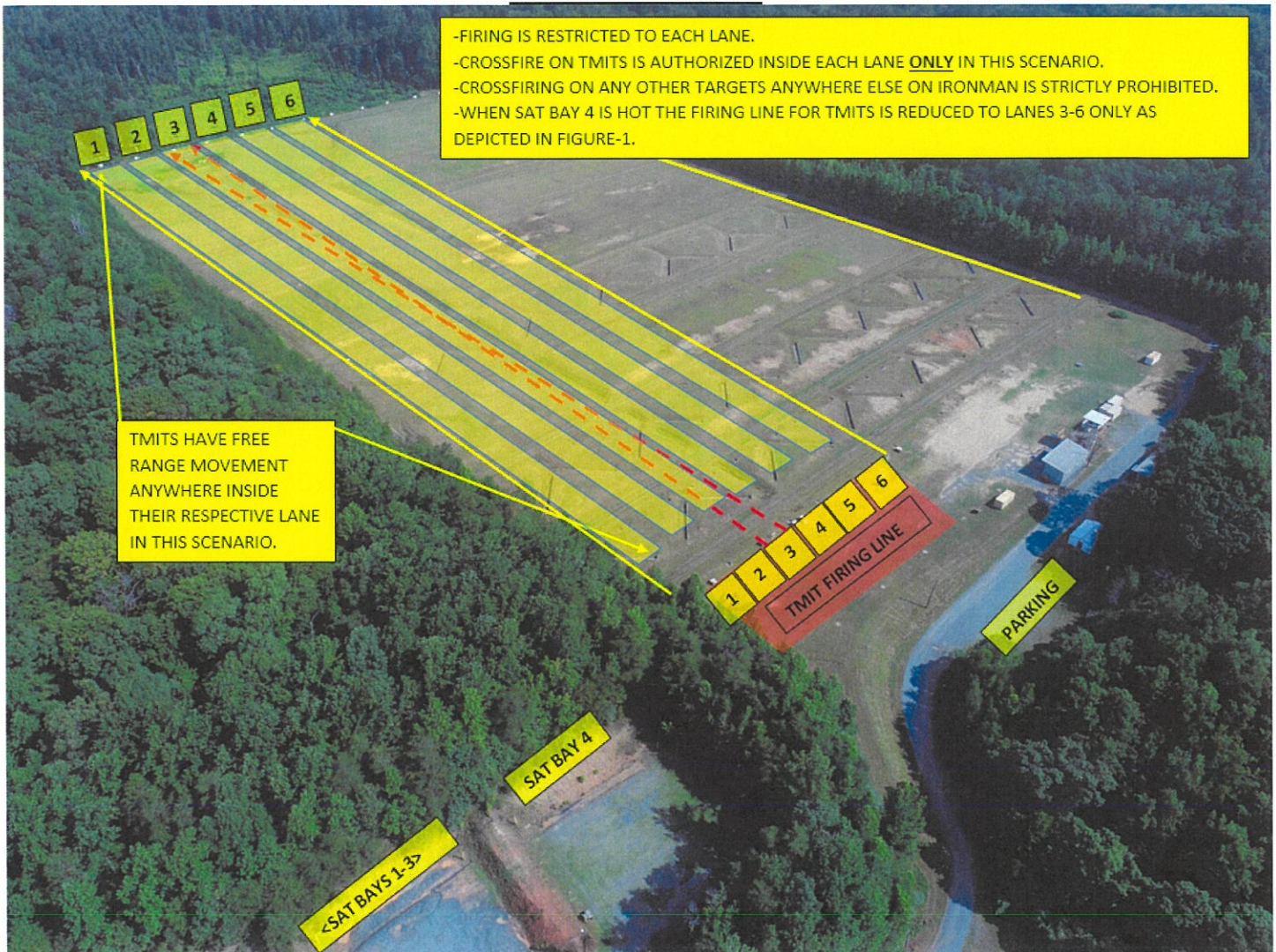


FIGURE-3

Special Instructions for Trackless Mobile Infantry Targets (TMIT):

- TMIT Scenario-1 (Figure-2) (133m wide x 245m deep "triangle"):
 - Firing from any point along the left half of firing line on TMITs in this scenario is authorized.
 - Crossfire on TMITs is authorized in this scenario only.
 - Cross firing on any other targets anywhere else on Ironman is strictly prohibited.
 - When SAT bay 4 is hot the firing line for TMITs is reduced to lanes 3-6 only as depicted in Figure-1.
- TMIT Scenario-2 (Figure-3) (18.5m wide x 400m deep lanes):
 - Firing is restricted to each lane.
 - Crossfire on TMITs is authorized inside each lane only in this scenario.
 - Cross firing on any other targets anywhere else on Ironman is strictly prohibited.
 - When SAT bay 4 is hot the firing line for TMITs is reduced to lanes 3-6 only as depicted in Figure-1.

TMIT SCENARIOS BY GRID AND DIMENSIONS

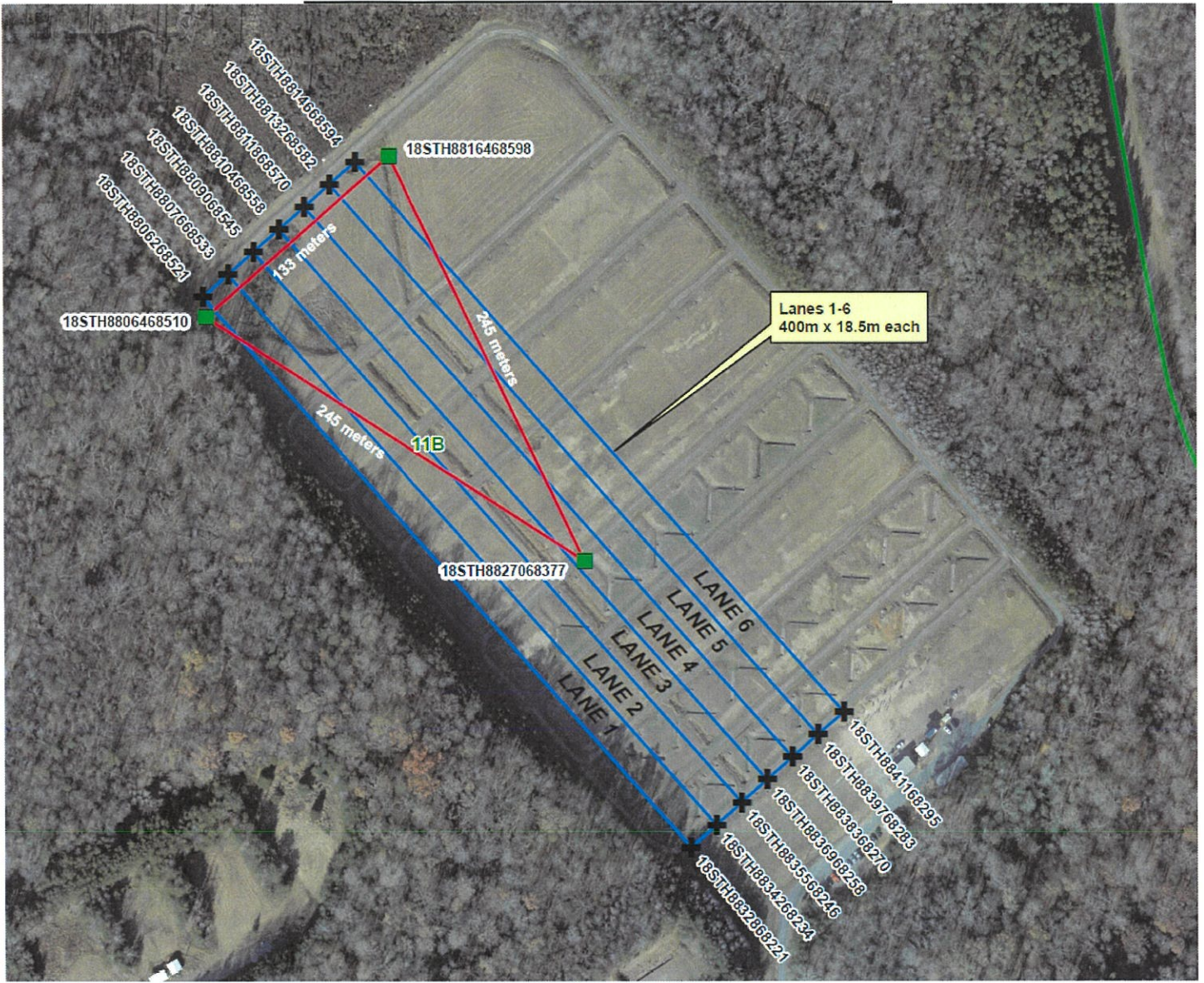


FIGURE-4

LASERS AUTH: Class 1 - 3R. Standard aiming devices mounted on approved service rifles. Class 3B (Ex: PEQ-15/16) can be fired if safety screw is installed in lock out, preventing high power settings.

ADDITIONAL RANGE INFORMATION:

PRIMARY DIRECTION OF FIRE. Northwest

RANGE USE RESTRICTIONS/COMMENTS

1. All range regulations MCO 3570.1, MCBO 3570.1, and this SOP will strictly adhered to.
2. Using unit will check-in with WTBn S-3 and receive range brief and radios prior to occupying the range.
3. For WTBN units/sections: The OIC and RSO will be physically present on the range at all times during live fire training and events. For multiple ranges/events in one unit/section, only one OIC is required, but must be physically located on one of the ranges (SAT Range excluded).
4. For external units: The OIC and RSO will be physically present on each range at all times during live fire training and events. For multiple ranges/events with external units, an OIC and RSO is required for each range, and must be physically located on each of those ranges.
5. The Officer-in-Charge (OIC) shall be the rank of Staff Sergeant or above and will be certified in accordance with MCBQ Range Regulations. The Range Safety Officer (RSO) shall be the rank of Sergeant or above and will be qualified in accordance with MCBQ Range Regulations.
6. Red range flag is placed on the pole next to the range entry point. Red flashing light will be used for night firing.
7. All target debris and trash will be removed from the range and inspected before departing.
8. The only weapons and ammunition to be used are those included in this SOP and detailed in RFMSS. There shall be no deviations from or modification to the approved weapons and ammunition.
9. The only targets to be used on this range are the automated target systems, approved SRTs, paper, wood, plastic and TMITs. Approved static targets are only to be placed on the left half of the range. No other targets are authorized.
10. SRTs are authorized on the left half of Ironman only.
11. WTBN SAT Range (to the left) conflicts with Ironman.

a. When Bays 1-3 of WTBn SAT Range are hot, personnel may not be downrange on Ironman forward of the main firing line as indicated in Figure-1. The main firing line consists of the flat area from the bleachers to the first terrain drop off moving down range.

b. When Bay 4 of the WTBn SAT Range is hot, personnel may not occupy the firing line on the extreme left side of Ironman lanes 1 and 2 the area indicated by red in Figure-1. This area is represented on the range by two posts. One just forward of the firing line and one adjacent to the dedication marker near the tree line.

12. Fire and Movement or Fire and Maneuver are not authorized. The only exception is firing on the move to support the execution of the Marine Corps Combat Marksmanship Program Table 2-4 and training scenarios based upon Table 2-4. Firing on the move will occur only on the main firing line.

13. With the exception of the limited cross-fire authorized for TMITs, all firing across the face of the range is not authorized. Shooters will fire straight downrange in a lane-oriented fashion, and ALL impacts will be within the range lateral limit markers.

14. Automatic fire is authorized for 6-9 round burst only. Automatic fire must be in the Communication Tab of the RFMSS range request and the RCF must know the range is conducting automatic fire prior to going hot.

15. The automated target system will be set-up by a contractor, and is scheduled through RFMSS and the Training System Support Desk.

16. Lane 13, far right end of the range, has been permanently dismantled. SDZ's from Lane 13 cross MCB-1 and may not be restored.

17. Special consideration will be put on firing tracers during heightened fire danger class codes due to this range not having an impact berm.

18. M203/40mm ground smoke can only be fired on the left half in lanes 1-6 due to fire hazard for automated targets in lanes 7-12 of the right half.

19. Units that have requested contractor support (TMITs, automated targets, PITS targets, battlefield effects simulators, etc.) are required to contact a Government representative (TECOM Systems Support Officer (SSO) or Fire Desk) if the unit will not be present on the specified range within 1 hour of the approved time in RFMSS..

20. Units that have occupied a range with approved contractor support (TMITs, automated targets, PITS targets, battlefield effects simulators, etc.) and that have not begun to use that support within 2 hours of the approved time in RFMSS will forfeit all contracted support for the day.

21. Units that are training with contractor support (TMITs, automated targets, PITS targets, battlefield effects simulators, etc.) that place

themselves into a voluntary check fire for 2 hours or more during the approved support hours will forfeit remaining support for the day.

NOTE: Units that encounter situations where contractor support (TMITs, automated targets, PITS targets, battlefield effects simulators, etc.) is delayed or interrupted by circumstances beyond the control of the requesting unit (RMB directed check fire, ASP support, MEDEVAC, etc.) must contact a Government representative (SSO or Fire Desk) in order to arrange continued support within the scope of the contract and available assets.

22. If battle effect simulators are to be used on this range, qualified personnel trained on the systems must be present.

FACILITIES

Towers: 1 Used by the range support Contractor to control automated targets. Firing from this tower is not authorized.

Bleachers: 1

Sheds: 2

Ammo Breakdown table: 1

Heads: Porta-Johns (3)

Parking: Limited

UTILITIES AVAILABLE

Electricity: Yes

Lights: Yes

Water System: None

INSTALLED COMMUNICATIONS. None.

Nearest MEDEVAC Landing Zone:

-LZ Wren

-Located on the northeast corner of Ironman at grid: 883686

AVAILABLE DAYS/HOURS. 362/0500-2400 (Airspace needed 0000-0459, must request in advance)

AREA SUITABILITY

<u>Unit Type</u>	<u>Unit Size</u>	<u>Number of Units</u>
Combat	Company	1

GEOGRAPHICAL DATA

Access Routes: Willis Road

Soil Type: Dirt

Terrain Type: Small hills

Vegetation: Grass/Woodlands

APPLICABLE MAP SHEET. All grid coordinates listed in this order apply to the Quantico Military Installation Map V834S Edition 5-NGA 1:25000.

COMMUNICATION REQUIREMENTS:

1. A radio check is required immediately upon occupying any portion of the RTA, every 30 minutes in a live fire status and every 3 hours in a non-live fire status.
2. The Range Control Facility (RCF) Fire Desk call sign is "Range Control". Your call sign is "**Ironman**".
3. The primary RCF Fire Desk frequencies are: ELMR talk group "RC Safety" (ground) and 323.7 AM UHF (air).
4. The secondary RCF Fire Desk means of communication is telephone, numbers: 703-784-5321 or 5322.
5. The OIC/RSO will monitor the RCF primary and secondary means of communication at all times. Instant communication is required.
6. Any unit with organic ELMR radios will have their ELMR radios programmed with the "RC Safety" talk group and use those radios as their primary means of communication within the RTA.
7. Units without organic ELMR assets will be issued ELMR radios from RMB Safety or WTBn S-3/OOD upon check-in.
8. Approved Non-ELMR radios are only authorized for internal communication (ground).
9. If the RCF cannot reach a unit within the RTA via primary communication, the unit will be contacted via the secondary means of communication.
10. Upon loss of primary means of communication the OIC/RSO will initiate a "check fire"/cease training status and will contact the RCF via secondary means of communication. This communication will be maintained while primary communication is being restored. Units may only resume firing/training once primary communication has been re-established and clearance is granted by the RCF.

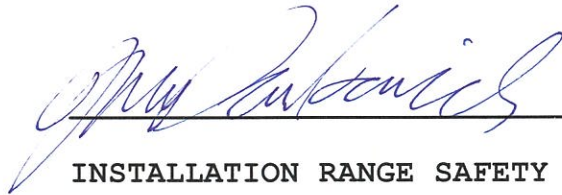
INJURY CLASSIFICATIONS:

Injuries are classified into the following categories in order to aid in casualty evacuation from the RTA.

1. ROUTINE. Routine injuries are those injuries that are not threatening to life, limb or eyesight; and conditions or illnesses treatable by medication or procedures available at the base medical facilities.
2. PRIORITY. Priority injuries are those injuries that require immediate medical attention but are not threatening to life, limb, or eyesight if treated promptly.
3. URGENT. Urgent injuries are severe injuries that are threatening to life, limb, or eyesight and require immediate medical attention.
4. MASS CASUALTY. A mass casualty is a series of injuries with multiple priority and urgent medical patients.

MEDICAL EVACUATION (MEDEVAC) PROCEDURES:

1. Injury occurs.
2. Range immediately ceases firing.
3. Range notifies S-3/OOD of injury.
4. S-3/OOD dispatches corpsman.
5. Medical support evaluates/treats injured personnel.
6. OIC notifies the RCF of the injury, stating briefly what happened, the extent of the injury and what type of MEDEVAC transportation needed (ground/air).
7. Maintain constant radio contact with Range Control and await further instructions.


A handwritten signature in blue ink, appearing to read 'J. M. Subotic', is written over a horizontal line.

INSTALLATION RANGE SAFETY OFFICER

DATE: 22 JUNE 2022