



Marine Corps Base Quantico



MCB Quantico Known Hazards Brief

v 1.0

Updated Jan 15, 2025

Installation Range Safety Officer
Range Management Branch

UNCLASSIFIED



Known Hazards Brief



Communications:

- Phone: 703-784-5321
- ELMR Radio: Call Sign “RANGE CONTROL”

Movement:

- Stop at all locked gates and barriers
- Call Range Control before entering

Known Hazards:

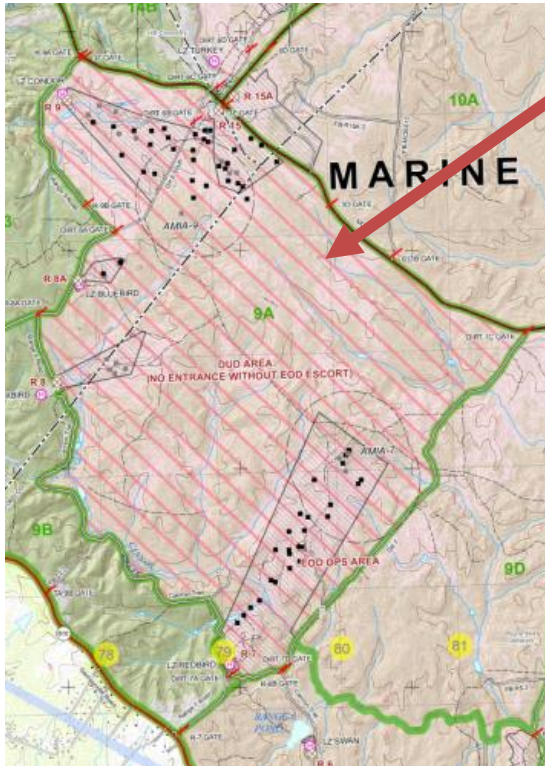
-TA-9A & SMALL PORTION OF TA-7B ARE HIGH HAZARD IMPACT AREAS!

- Active live fire ranges:** Active day or night. Never go around a locked gate or a barrier.
- Active training areas:** Active day or night. Use caution and stay alert at all times.
- Personnel on roads:** Active day or night. Use caution and stay alert at all times.
- Downed trees on roads:** Usually after heavy rain or snow. Stay alert at all times.
- Large potholes on roads:** More risk between Fall and Spring. Slow down and stay alert.
- Washouts on roads:** No shoulders on the hardball roads makes them prone to washout.
- Dusty conditions on gravel roads:** Substantially reduces visibility. Slow down, increase following distance. Max speed in these conditions is 25mph. Slower if conditions worsen.
- Blind/sharp curves:** Increased chance of rollover.
- Overgrown vegetation:** Decreased visibility merging onto Rt610 from perimeter ranges
- UXO:** Apply the Three-R's: Recognize, Retreat, Report.
- Wildlife:** Deer, Turkey, Snakes, and small game wander onto roads. Use caution, stay alert.

UNCLASSIFIED

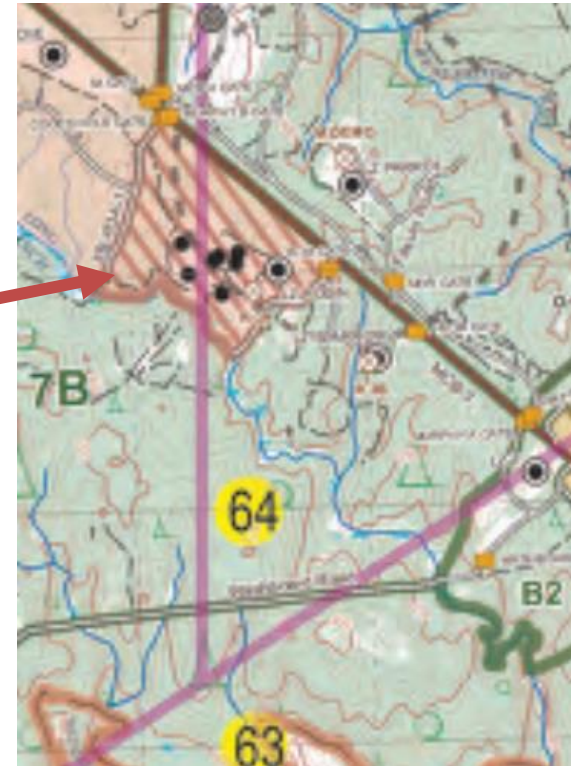


HIGH HAZARD IMPACT AREAS



TA-9A: Bordered by MCB-3, Dirt-7, and Range-9 Rd.

TA-7B: Bordered by MCB-3, Fire Break R3A-1, and Range 3.



- The areas of the Quantico MIM marked with red lines indicate the High Hazard Impact Areas
- These areas contain a high concentration of unexploded ordnance (UXO)
- DO NOT ENTER for any reason



ACTIVE LIVE FIRE RANGES



- Stop at all locked gates and barriers
- Call Range Control before entering
- Never go around, it is dangerous



LARGE POTHOLES



CAN OCCUR ANYTIME ON ANY ROAD



**TOKYO ROAD:
GRAVEL/IMPROVED: FEB 2019**



**MCB-3/G-DEMO RD.
ASPHALT/HARDBALL: FEB 2019**

UNCLASSIFIED



UXO



UXO IS NOT RESTRICTED TO RANGES AND MAY BE FOUND ANYWHERE IN THE RTA



EASY TO SEE

3-R's

Recognize

Retreat

Report



NOT SO EASY TO SEE



Known Hazards Brief



Communications:

- Phone: 703-784-5321
- ELMR Radio: Call Sign "RANGE CONTROL"

Movement:

- Stop at all locked gates and barriers
- Call Range Control before entering

Known Hazards:

ANY OF THE HAZARDS LISTED HERE WILL BE POSTED WHEN THEY OCCUR OR HAVE BEEN IDENTIFIED AND BRIEFED AT THAT TIME.

CONTACT RANGE CONTROL BY PHONE AT 703-784-5321 OR ON THE RADIO ISSUED AT TIME OF CHECK OUT TO REPORT ANY OF THE HAZARDS WHEN YOU FIND THEM.

UNCLASSIFIED